

### Roofing Resin

Used to form the GRP laminate with the reinforcement mat.

UNIT SIZE	COVERAGE	PRODUCT CODE
10kg	6.75m <sup>2</sup>	RESCUREIT10
20kg	13.5m <sup>2</sup>	RESCUREIT20



### Roofing Topcoat

Graphite Grey Topcoat provides the finished colour and surface appearance.

UNIT SIZE	COVERAGE	PRODUCT CODE
5kg	12.5m <sup>2</sup>	TOPCUREITGRAPHITE5
10kg	25m <sup>2</sup>	TOPCUREITGRAPHITE10
20kg	50m <sup>2</sup>	TOPCUREITGRAPHITE20



Other Pre-Mix Topcoat colours available on the next page.

### Hardener

Hardener for resin and topcoat.

UNIT SIZE	PRODUCT CODE
1kg Summer	CATCURE51
5kg Summer	CATCURE55
1kg Winter	CATCUREW1
5kg Winter	CATCUREW5
1kg Extra Slow	CATCURELPT1
5kg Extra Slow	CATCURELPT5



**IMPORTANT:** Read handling and storage instructions.

### Hardener Dispenser

Hardener should not be added to resin or topcoat without the safety dispenser.

PRODUCT CODE
CATDCUREIT



### Acetone

Used for cleaning tools, spillages and as a surface decontaminant.

UNIT SIZE	PRODUCT CODE
1L	ACETONECURE1
5L	ACETONECURE5



### Trim Adhesive

Used for bonding GRP edge trims around the perimeter of the roof.

PRODUCT CODE
PUCUREGREY



### Mixing Bucket

Essential for determining the correct hardener addition.

PRODUCT CODE
BUCKCURE



### Concrete Primer

Primer for preparing concrete substrates.

UNIT SIZE	COVERAGE	PRODUCT CODE
2.5kg	5m <sup>2</sup>	CUREITCONCRETEPRIMER2.5L
5kg	10m <sup>2</sup>	CONPRIMER5L



### Slate Granules

Used to achieve coated aggregate finish or anti-slip for F:AA fire rating.

UNIT SIZE	PRODUCT CODE
25kg	SLATE



### 10-12m<sup>2</sup> Roof Kit

The Cure It GRP roof kit includes all of the laminating materials you need for a 10-12m<sup>2</sup> Cure It GRP laminate.

PRODUCT CODE
CUREITKIT

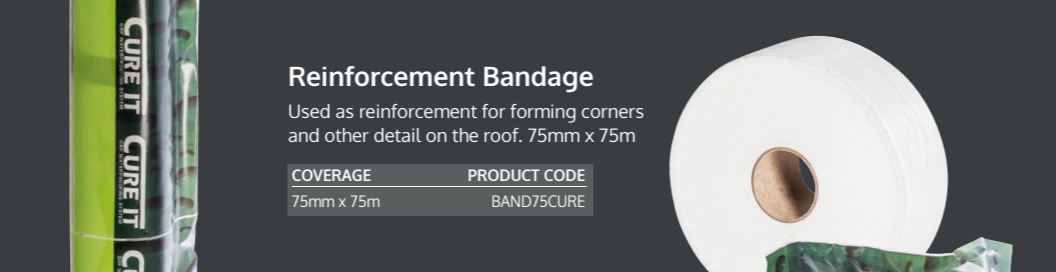


## Reinforcements

### Reinforcement Mat

Forms the GRP laminate when combined with Roofing Resin.

UNIT SIZE	COVERAGE	PRODUCT CODE
6.6kg	13m <sup>2</sup>	CSM450CURE15
16.5kg	32.5m <sup>2</sup>	CSM450CUREHALF
33kg	66m <sup>2</sup>	CSM450CURE



### Reinforcement Bandage

Used as reinforcement for forming corners and other detail on the roof. 75mm x 75m

COVERAGE	PRODUCT CODE
75mm x 75m	BAND75CURE

### Detail Tissue

For finishing corner and joint detail.

COVERAGE	PRODUCT CODE
150mm x 25m	TISS150CUREDETAIL

**Pre-Mix Topcoats** - Provides the finished colour and surface appearance. Available to order now.

COLOUR	UNIT SIZE	COVERAGE	PRODUCT CODE	COLOUR	UNIT SIZE	COVERAGE	PRODUCT CODE
Battleship Grey	5kg	12.5m <sup>2</sup>	TOPCURECT805KG	Stratus Grey	5kg	12.5m <sup>2</sup>	TOPCURECT225KG
Battleship Grey	10kg	25m <sup>2</sup>	TOPCURECT8010KG	Stratus Grey	10kg	25m <sup>2</sup>	TOPCURECT2210KG
Battleship Grey	20kg	50m <sup>2</sup>	TOPCURECT8020KG	Stratus Grey	20kg	50m <sup>2</sup>	TOPCURECT2220KG
Cacao Brown	5kg	12.5m <sup>2</sup>	TOPCURECT395KG	Sherwood Green	5kg	12.5m <sup>2</sup>	TOPCURECT775KG
Cacao Brown	10kg	25m <sup>2</sup>	TOPCURECT3910KG	Sherwood Green	10kg	25m <sup>2</sup>	TOPCURECT7710KG
Cacao Brown	20kg	50m <sup>2</sup>	TOPCURECT3920KG	Sherwood Green	20kg	50m <sup>2</sup>	TOPCURECT7720KG
Anthracite Grey	5kg	12.5m <sup>2</sup>	TOPCURECT485KG	Midnight Green	5kg	12.5m <sup>2</sup>	TOPCURECT565KG
Anthracite Grey	10kg	25m <sup>2</sup>	TOPCURECT4810KG	Midnight Green	10kg	25m <sup>2</sup>	TOPCURECT5610KG
Anthracite Grey	20kg	50m <sup>2</sup>	TOPCURECT4820KG	Midnight Green	20kg	50m <sup>2</sup>	TOPCURECT5620KG

### Accessory Pack

The accessory pack includes all of the tools and accessories required for laminating a GRP roof. The rollers and brushes in this pack are designed for use with our resins. Other third party products are likely to be unsuitable for this purpose.

PRODUCT CODE
CUREITACCESSORY



### Application Roller

UNIT SIZE	PRODUCT CODE
70mm	ROLLER3
140mm	ROLLER6
230mm	ROLLER9



### 175mm Premium Roller (5 pack)

UNIT SIZE	PRODUCT CODE
5 pack	ROLLER7CUREITBOX5
50 pack	ROLLER7CUREITBOX50



### 175mm Premium Roller Sleeves (5 pack)

UNIT SIZE	PRODUCT CODE
5 pack	ROLLERSLEEVE7CUREITBOX5
50 pack	ROLLERSLEEVE7CUREITBOX50



### Laminating Brush

For detail work and bandaging.

UNIT SIZE	PRODUCT CODE
25mm	BRUSH1
50mm	BRUSH2
75mm	BRUSH3
100mm	BRUSH4



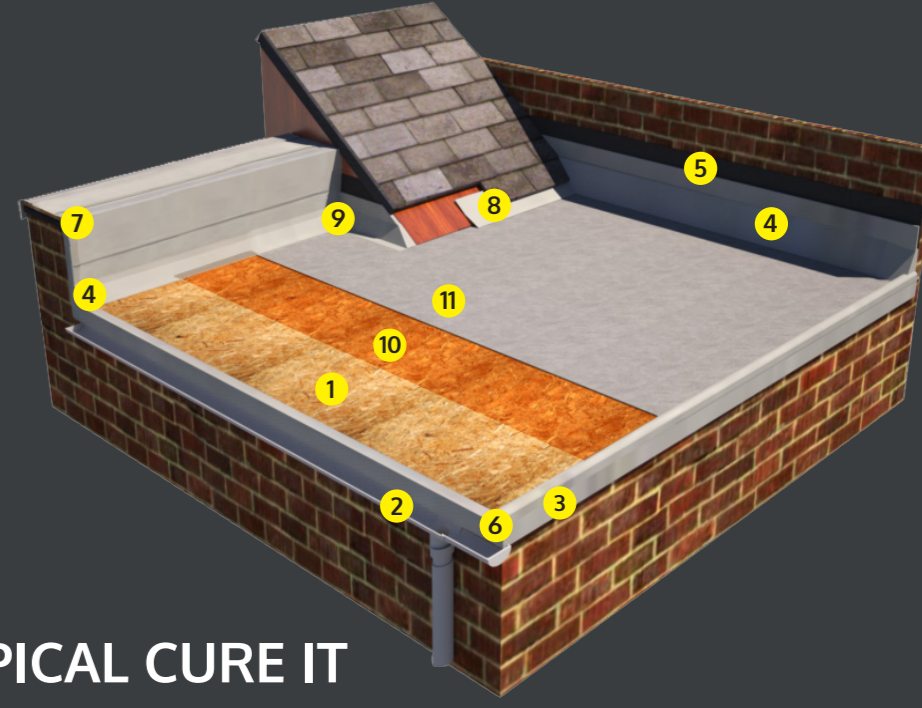
### Extension Pole and Swivel Sanding Pad

PRODUCT CODE
EXTENSIONPOLE
SANDINGPAD



### High Performance Hand Cleaner

UNIT SIZE	PRODUCT CODE
1L	HANDCURE



## TYPICAL CURE IT ROOF BUILD UP

- OSB3 18MM DECKING BOARDS (T&G 2400MM X 600MM RECOMMENDED)
- A200 (FASCIA TRIM) USED FOR GUTTER/DRIP EDGE/FASCIA
- B260 (RAISED EDGE) TRIM USED TO FORM UPSTANDS
- D260 (FILLET TRIM) USED AGAINST ABUTTING WALLS WITH C100 FLASHING
- C100 (FLASHING TRIM) SIMULATED LEAD FLASHING FOR USE WITH D260
- C1 (UNIVERSAL CORNER) FOR USE WITH A200 AND B260 PROFILES TO FORM LEFT OR RIGHT HAND CORNER
- AT300 EXT (EXTRA LONG EXTERNAL ANGLE TRIM) FOR ENCAPSULATING BLOCK/STEP FEATURES INCLUDING PARAPET WALL DETAIL
- F300 (FLAT FLASHING) FLAT SHEET FOR USE AS CONTINUOUS FLASHING UNDER SLATES AT A ROOF JUNCTION. CAN ALSO BE USED AS A GUTTER LINING
- C3 INT/EXT (FILLET CORNER) FOR USE WITH D260 PROFILE TO FORM INTERNAL OR EXTERNAL CORNER
- GRP LAMINATE CONSISTING OF:-
  - CURE IT ROOFING RESIN
  - CURE IT REINFORCEMENT MAT
- CURE IT TOPCOAT

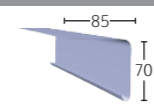




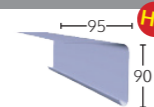
## A Trims



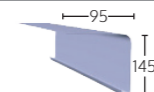
**A170** - Product Code: TRA170  
**Fascia Trim** - Fitted to roof edges to allow drainage.



**A200** - Product Code: TRA200  
**Fascia Trim** - Fitted to roof edges to allow drainage into gutter. Compatible with C1, C2 and C4 corner trims.



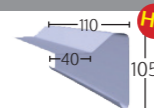
**A250** - Product Code: TRA250  
**Fascia Trim** - Fitted to roof edges to allow drainage into gutter. Compatible with C1, C2 and C4 corner trims.



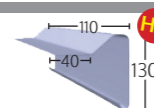
## B Trims



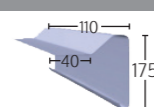
**B230** - Product Code: TRB230  
**Raised Edge Trim** - Flat roof edge detail to prevent water run off. Drip matches A170.



**B260** - Product Code: TRB260  
**Raised Edge Trim** - Flat roof edge detail to prevent water run off. Compatible with C1, C2 and C4 corner trims.



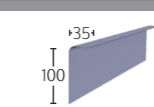
**B300** - Product Code: TRB300  
**Deep fascia raised edge trim.** Ideal for a warm roof specification. Drip matches with A250 trim.



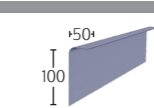
## C Trims\*



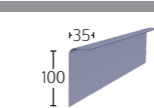
**C100** - Product Code: TRC100  
**Simulated Lead Flashing** - Replaces traditional lead flashing. Dark grey, non adhesive finish to simulate the appearance of lead.



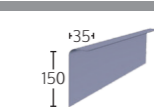
**C100L** - Product Code: TRC100L  
**Simulated Lead Flashing Long Leg** - As C100 with deep wall penetration.



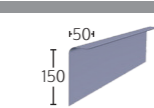
**C100MT** - Product Code: TRC100MT  
**Simulated Lead Flashing with Moisture Trap** - As C100 with integral self-securing moisture trap.



**C150** - Product Code: TRC150  
**Simulated Lead Flashing** - Replaces traditional lead flashing. Dark grey, non adhesive finish to simulate the appearance of lead.



**C150L** - Product Code: TRC150L  
**Simulated Lead Flashing Long Leg** - As C150 with deep wall penetration.



\*Do not topcoat

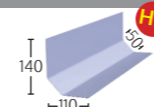
HD Heavy Duty Trim available

WWW.CUREIT.COM

## D Trims



**D260** - Product Code: TRD260  
**Wall Fillet** - Asymmetric fillet trim for use against abutting walls. Also provides expansion.



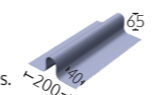
**D300** - Product Code: TRD300  
**Long Flange Wall Fillet** - Extra wide asymmetric fillet for use against abutting walls. Also provides expansion.



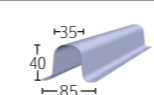
## E Trims



**E280** - Product Code: TRE280  
**Raised Ridge Roll** - Used as an expansion joint on larger roofs and to create rolls on any ridge details. Compatible with C5 preformed closures.



**ER35/40** - Product Code: TRER35/40  
**Simulated Lead Rolled Joint (Rolled Rib)** - Simulates the appearance of raised rolled lead joints. Compatible with C6 preformed closures.



## F Trims



**F150/300/600/900**  
**Flat Flashing** - Flat section for use as continuous flashing under slates at a roof junction. It can also be used as a gutter lining.  
 Min width: 150 - Max width: 900 Max length: 20m Roll

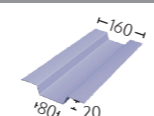


TRIM	LENGTH	PRODUCT CODE
F150	150MM WIDTH - 20M	TRF150
F150	150MM WIDTH - 10M	TRF15010MTR
F300	300MM WIDTH - 20M	TRF300
F300	300MM WIDTH - 10M	TRF30010MTR
F300	300MM WIDTH - 5M	TRF3005MTR
F300	300MM WIDTH - 3M	TRF3003MTR
F600	600MM WIDTH - 20M	TRF600
F600	600MM WIDTH - 10M	TRF60010MTR
F600	600MM WIDTH - 5M	TRF6005MTR
F900	900MM WIDTH - 20M	TRF900
F900	900MM WIDTH - 10M	TRF90010MTR

## G Trims



**G180** - Product Code: TRG180  
**Gulley Trim** - Used on larger roofs to aid drainage.



## S Trims



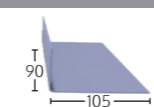
**S500** - Product Code: TRS500  
**Soffit Trim** - To fully encapsulate a concrete edge or similar roof edge detail.



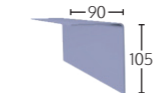
## AT Trims



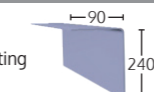
**AT195Int** - Product Code: TRAT195IT  
**Internal Angle Trim** - High adhesion surface on inner face for forming upstands, gutter floors etc.



**AT195Ext** - Product Code: TRAT195E  
**External Angle Trim** - High adhesion finish on outer face for step details, cover flashings etc.

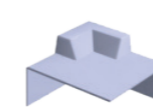


**AT300Ext** - Product Code: TRAT300EXT  
**External Angle Trim** - Extra-long external angle trim for encapsulating block/step features including parapet wall detail.

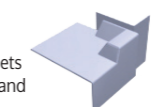


## Preformed Corners

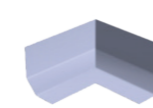
**C1** - Product Code: C1  
**Universal External Corner** - For use with all A and B trims to form a left or right hand corner.



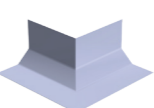
**C2** - Product Code: C2L/C2R  
**Fillet to Trim** - For use where a flat roof meets an abutting wall. Compatible with all A, B and D trims. Right and left corners available.



**C3 (Int)** - Product Code: C3INT  
**Internal Fillet Corner** - Used as a preformed internal corner for all D-trims. Avoids mitring in situ.



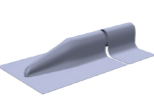
**C3 (Ext)** - Product Code: C3IEXT  
**External Fillet Corner** - Used as a preformed external corner for all D trims. Avoids mitring in situ.



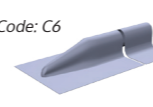
**C4** - Product Code: C4  
**Universal Internal Corner** - For use with A200 and B260 trims to form a left or right hand corner.



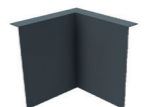
**C5** - Product Code: C5  
**Roof Ridge Closure** - Preformed closure for use with E280 profiles.



**C6 (ER35/40)** - Product Code: C6  
**Rolled Rib Closure** - Preformed closure trim for use with ER35/40 profiles.



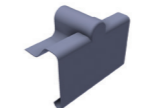
**C7 (Int)** - Product Code: C7INT  
**Simulated Lead Flashing Corner** - Preformed internal corner for C100 and C150 type flashings.



**C7 (Ext)** - Product Code: C7EXT  
**Simulated Lead Flashing Corner** - Preformed external corner for C100 and C150 type flashings.



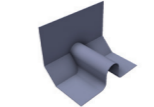
**C8B** - Product Code: C8B  
**Expansion Closure** - For use on expansion joints. Compatible with E280 and all B trims.



**C9A** - Product Code: C9A  
**Expansion Closure** - For use on expansion joints. Compatible with E280 and all A trims.



**C11D** - Product Code: C11D  
**Expansion Closure** - For use on expansion joints. Compatible with E280 and all D trims.



## Other Essentials

PRODUCT CODE	PRODUCT CODE
Eye Wash - 500ml bottle EYEWASH500	Ring and Latch Lid - Re-sealable lid LID
Disposable Gloves - 100 Latex Pack GLOV	



# CURE IT

GRP ROOFING SYSTEM

## PRODUCTS