

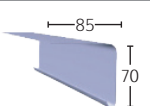
Trim Range

A Trims



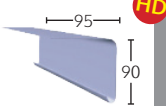
A170 - TRA170

Fascia Trim - Fitted to roof edges to allow drainage.



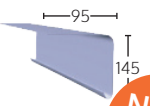
A200 - TRA200

Fascia Trim - Fitted to roof edges to allow drainage into gutter. Compatible with C1, C2, C4 and C9A corner trims.



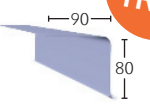
A250 - TRA250

Fascia Trim - Fitted to roof edges to allow drainage into gutter. Compatible with C1, C2 and C4 corner trims.



AF200 - TRAF200

Advanced Drip Fascia Trim - The new design eliminates water kick-back and only requires a single support batten.

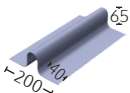


E Trims



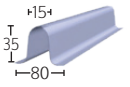
E280 - TRE280

Raised Ridge Roll - Used as an expansion joint on larger roofs and to create rolls on any ridge details. Compatible with C5, C8B, C9A and C11D preformed closures.



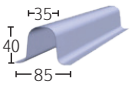
ER15 - TRE15

Simulated Zinc Standing Seam Trim - Simulates the appearance and finish of a traditional Zinc standing seam roof.



ER35/40 - TRER35/40

Simulated Lead Rolled Joint (Rolled Rib) - Simulates the appearance of raised rolled lead joints. Compatible with C6 preformed closures.



F Trims



F150/300/600/900 - TRF150/TRF300/TRF600/TRF900

Flat Flashing - Flat section for use as continuous flashing under slates at a roof junction. It can also be used as a gutter lining. Min width: 150 - Max width: 900



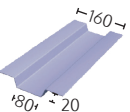
TRIM	LENGTH	PRODUCT CODE	TRIM	LENGTH	PRODUCT CODE
F150	150MM WIDE 20M	TRF150	F600	600MM WIDTH 20M	TRF600
F150	150MM WIDTH 10M	TRF15010MTR	F600	600MM WIDTH 10M	TRF60010MTR
F300	300MM WIDTH 20M	TRF300	F600	600MM WIDTH 5M	TRF6005MTR
F300	300MM WIDTH 10M	TRF30010MTR	F900	900MM WIDTH - 20M	TRF900
F300	300MM WIDTH 5M	TRF3005MTR	F900	900MM WIDTH - 10M	TRF90010MTR
F300	300MM WIDTH 3M	TRF3003MTR			

G Trim



G180 - TRG180

Gully Trim - Used on larger roofs to aid drainage.

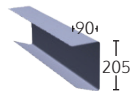


S Trim



S500 - TRS500

Soffit Trim - To fully encapsulate a concrete edge or similar roof edge detail.

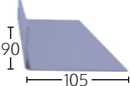


AT Trims



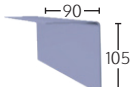
AT195Int - TRAT195IT

Internal Angle Trim - High adhesion surface on inner face for forming upstands, gutter floors etc.



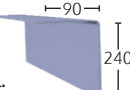
AT195Ext - TRAT195E

External Angle Trim - High adhesion finish on outer face for step details, cover flashings etc.



AT300Ext - TRAT300EXT

External Angle Trim - Extra-long external angle trim for encapsulating block/step features including parapet wall detail.

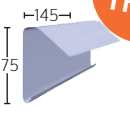


OLB Trim



OLB300 - TROLB300

RoofCell Overlay Trim - Extra wide trim to encapsulate existing edge detail when using RoofCell.

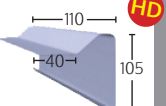


B Trims



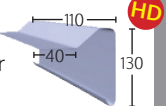
B230 - TRB230

Raised Edge Trim - Flat roof edge detail to prevent water run off. Drip matches A170.



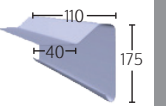
B260 - TRB260

Raised Edge Trim - Flat roof edge detail to prevent water run off. Compatible with C1, C2, C4 and C8B corner trims.



B300 - TRB300

Deep fascia raised edge trim. Ideal for a warm roof specification. Compatible with A250 trim.

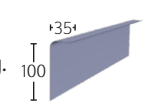


C Trims*



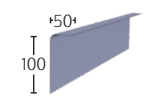
C100 - TRC100

Simulated Lead Flashing - Replaces traditional lead flashing. Dark grey, non adhesive finish to simulate the appearance of lead. Compatible with C7Int and C7Ext corner trims.



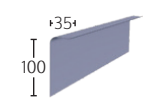
C100L - TRC100L

Simulated Lead Flashing Long Leg - As C100 with deep wall penetration. Compatible with C7Int and C7Ext corner trims.



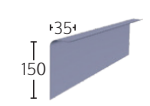
C100MT - TRC100MT

Simulated Lead Flashing with Moisture Trap - As C100 with integral self-securing moisture trap. Compatible with C7Int and C7Ext corner trims.



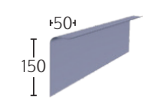
C150 - TRC150

Simulated Lead Flashing - Replaces traditional lead flashing. Dark grey, non adhesive finish to simulate the appearance of lead. Compatible with C7Int and C7Ext corner trims.



C150L - TRC150L

Simulated Lead Flashing Long Leg - As C150 with deep wall penetration. Compatible with C7Int and C7Ext corner trims.



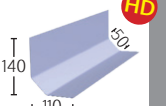
*Do not topcoat

D Trims



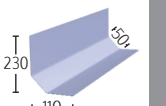
D260 - TRD260

Wall Fillet - Asymmetric fillet trim for use against abutting walls. Also provides expansion. Compatible with C2, C3Int and C3Ext corner trims and C11D.



D300 - TRD300

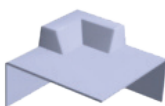
Long Flange Wall Fillet - Extra wide asymmetric fillet for use against abutting walls. Also provides expansion.



Pre-formed Corners

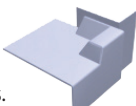
C1 - C1

Universal External Corner - For use with all A and B trims to form a left or right hand corner.



C2 - C2L/C2R

Fillet to Trim - For use where a flat roof meets an abutting wall. Compatible with all A, B and D trims. Right and left corners available.



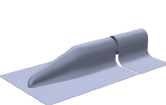
C4 - C4

Universal Internal Corner - For use with all A200 and B260 trims to form a left or right hand corner.



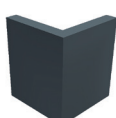
C5 - C5

Roof Ridge Closure - Pre-formed closure for use with E280 profiles.



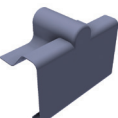
C7 (Ext) - C7EXT

Simulated Lead Flashing Corner - Pre-formed external corner for C100 and C150 type flashings.



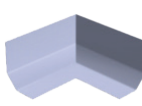
C8B - C8B

Expansion Closure - For use on expansion joints. Compatible with E280 and all B trims.



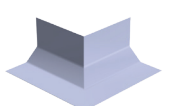
C3 (Int) - C3INT

Internal Fillet Corner - Used as a pre-formed internal corner for all D-trims. Avoids mitring in situ.



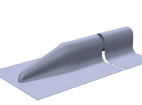
C3 (Ext) - C3IEXT

External Fillet Corner - Used as a pre-formed external corner for all D trims. Avoids mitring in situ.



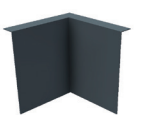
C6 (ER35/40) - C6

Rolled Rib Closure - Pre-formed closure trim for use with ER35/40 profiles.



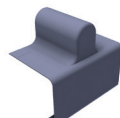
C7 (Int) - C7INT

Simulated Lead Flashing Corner - Pre-formed internal corner for C100 and C150 type flashings.



C9A - C9A

Expansion Closure - For use on expansion joints. Compatible with E280 and A200.



C11D - C11D

Expansion Closure - For use on expansion joints. Compatible with E280 and all D trims.

